

{ november 25 – january 7

HY



BRID  
(furniture)

push THE LIMITS  
OF FUNCTION

1928  
1929  
1930  
1931  
1932  
1933  
1934  
1935  
1936  
1937  
1938  
1939  
1940  
1941  
1942  
1943  
1944  
1945  
1946  
1947  
1948  
1949  
1950  
1951  
1952  
1953  
1954  
1955  
1956  
1957  
1958  
1959  
1960  
1961  
1962  
1963  
1964  
1965  
1966  
1967  
1968  
1969  
1970  
1971  
1972  
1973  
1974  
1975  
1976  
1977  
1978  
1979  
1980  
1981  
1982  
1983  
1984  
1985  
1986  
1987  
1988  
1989  
1990  
1991  
1992  
1993  
1994  
1995  
1996  
1997  
1998  
1999  
2000  
2001  
2002  
2003  
2004  
2005  
2006  
2007  
2008  
2009  
2010  
2011  
2012  
2013  
2014  
2015  
2016  
2017  
2018  
2019  
2020  
2021  
2022  
2023  
2024  
2025





# ROME

**MARC NEWSON**

GALERIE KREZ PARIS  
JUNE 9 - AUGUST 13

Louisiana provides a full view of Jacobsen's artistic output, and lets all aspects of his work stand out clearly. The exhibition will have a historical as well as a contemporary dimension. It will make use of models, drawings, settings and photography, as well as the most recent audio-visual and computer technology.

# Arne Jacobsen

The Egg chair from 1958 was developed for the lobby and reception areas at the Royal Hotel in Copenhagen.

# egg

JUNE 24 2003

is one of the most influential designers of his generation. His thinking process, use of materials, and innovative style has inspired many different avant-garde designers from the 1950's to present. This exhibition features Charles Eames' series of metal frame furniture, which shows a combination of architecture and design that was revolutionary to the time period. New design process and thinking were brought on by Eames working with designers, architects, manufacturers, and industrialists.

Charles Eames [1907 - 78] was born in the mid-west and as a young man worked for engineers and manufacturers, anticipating his lifelong interest in mechanics and the complex working of things. Eames later attended Cranbrook Academy of Art [1940] and profitted from their holistic design approach and its creed of better living through better design. Eames' experiences in the work force, college, and design practice helped to create his "new depth of vision."

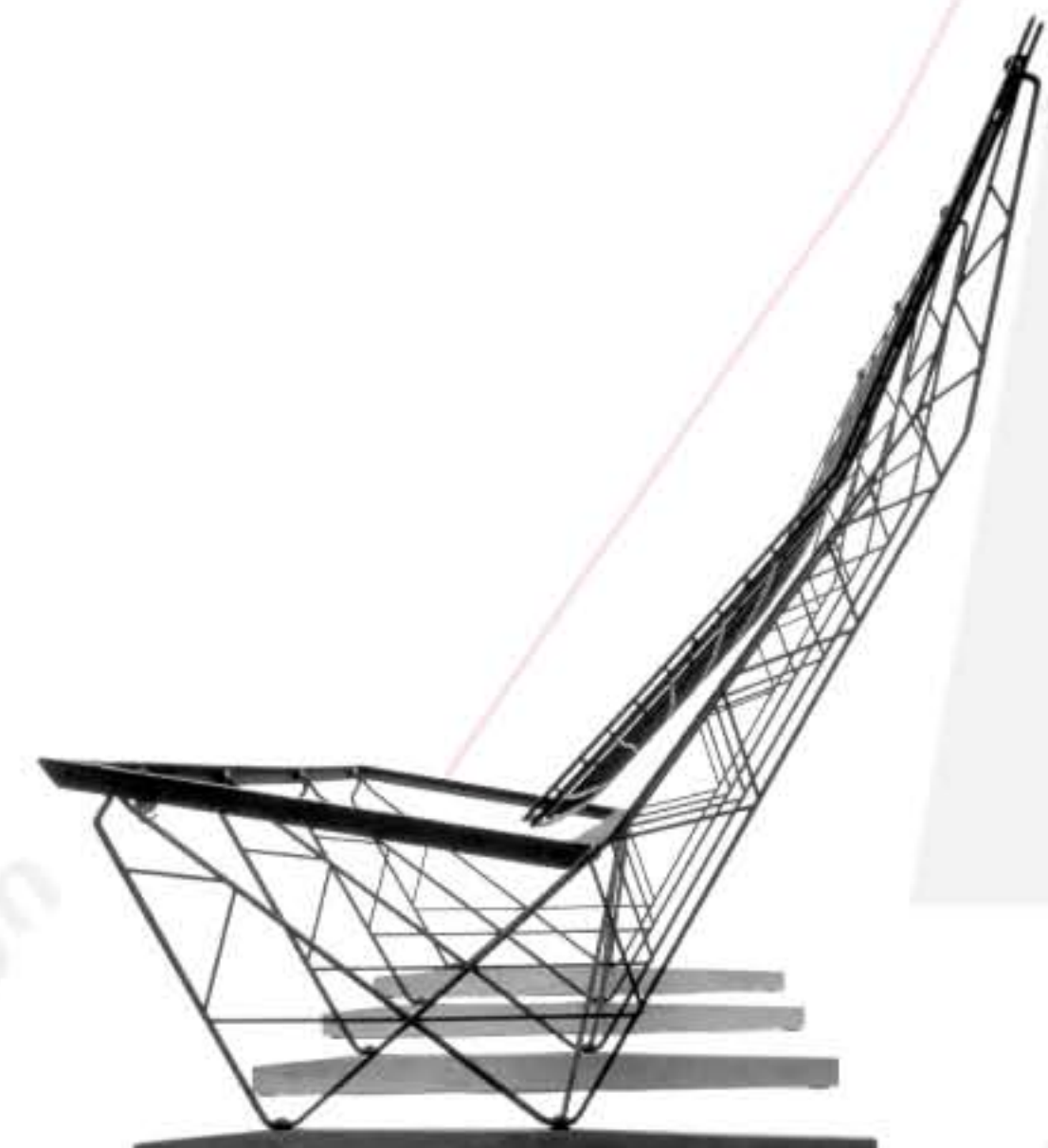
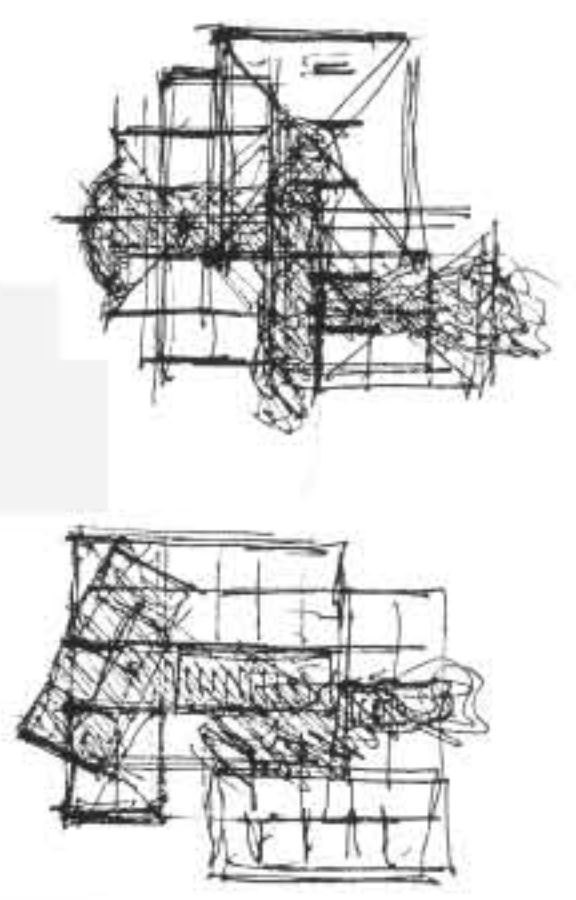
Through his furniture design, Charles got the opportunity to demonstrate his avant-garde style. The conceptual backbone of this diverse work was the search for seat and back forms that comfortably support the human body, using three dimensionally shaped surfaces or flexible materials instead of cushioned upholstery. This new method of approaching the design challenge, was supported by Eames' extensive experience and research in these numerous fields.

Eames wire-base side chairs include the single-shell plastic chair and wire chairs. Both the plastic and wire models rest on a bent-wire, welded base, also called the "Eiffel Tower" base. Immediate hits when they were introduced in the early 1950's, the chairs were design breakthroughs in the use of materials. Wire rod remained a favoured material for avant-garde designers all throughout the 1950's but his unique thought process for new material and style is still incorporated in most design today.

avant-garde designers

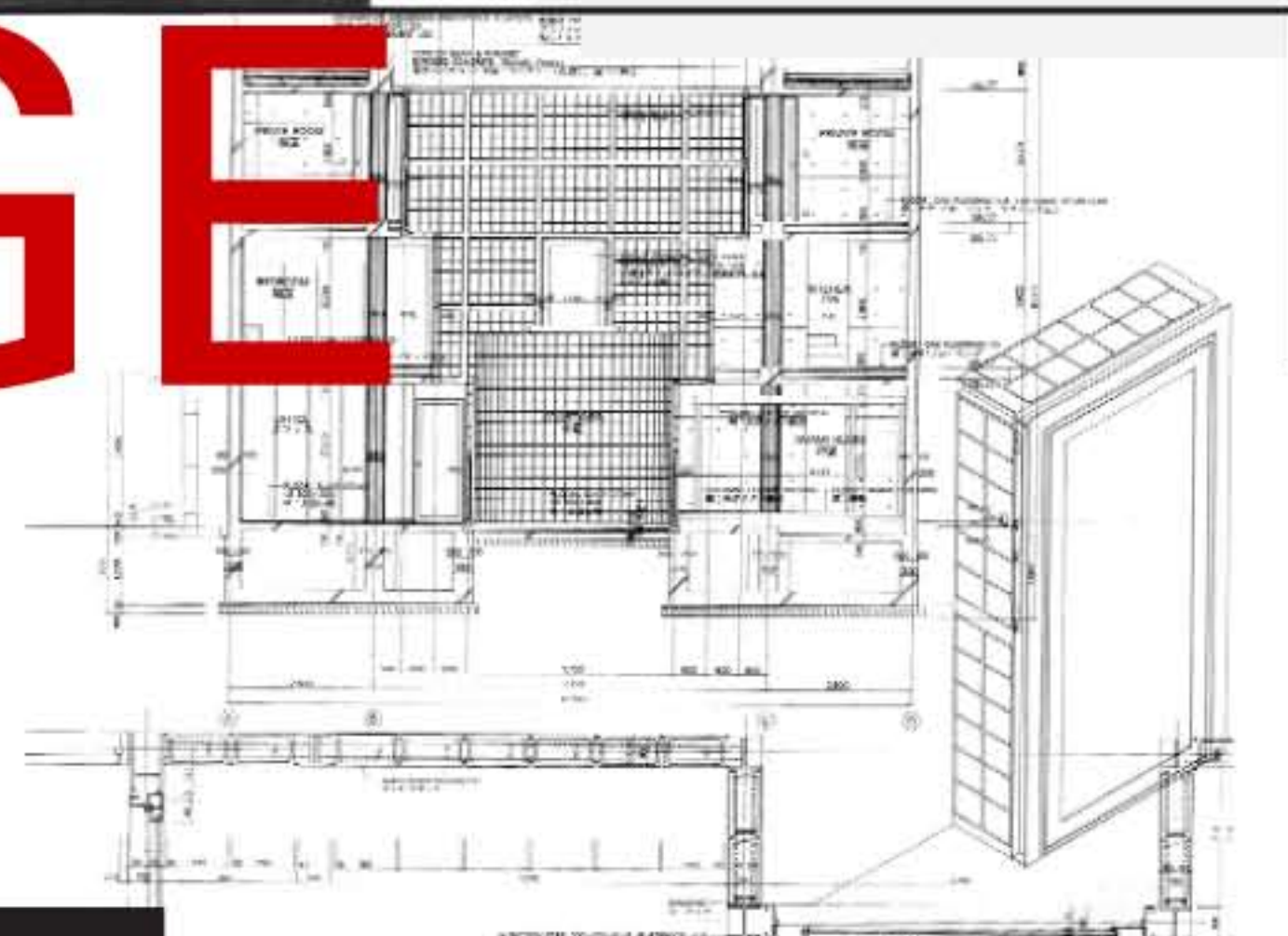
furniture design

architecture + design



Innovative Process

# Sitting ON THE EDGE



Museum of Modern Art  
Dec. 5, 2003 - March 8, 2004

Admission: Adults \$12, Students/Seniors \$8.50

The exhibition is made possible by Andrea Herstowski and Andi Witzak. Generous supports also provided by Kevin P. Heaton and Joseph Allen Gallagher. Additional funding is provided by The Contemporary Arts Council of the Museum of Modern Art. The accompanying educational programs are made possible by BNP Paribas.

MoMA QNS  
33 Street at Queens Blvd.  
Long Island City, Queens  
212.708.9400